

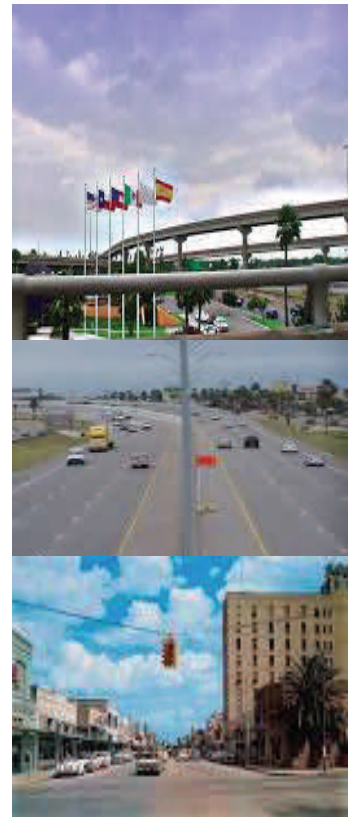


**2015-2040**

**METROPOLITAN  
TRANSPORTATION PLAN**



**Prepared by:  
Harlingen San Benito  
Metropolitan Planning Organization**



**Adopted by the Transportation Policy Committee: Dec. 3, 2014**

# 2015-2040

# Metropolitan Transportation Plan

## TABLE OF CONTENTS

### INTRODUCTION

Federal Guidance	1
Federal Transportation Planning Process	2
HSBMPO Organizational Structure	4
Transportation Policy Committee (TPC)	5
Technical Advisory Committee (TAC) & MPO Staff	6
Figure 1.1 HSBMPO Organization Structure Chart	7
Three Primary MPO Documents	8
2015-2040 HSBMPO Metropolitan Transportation Plan	9

### EXISTING CONDITIONS

Geographical Location	12
MPO Boundary Map	13
Urbanized Area Map	14
Socioeconomic Conditions	15
Age and Poverty	16
Tourism	17
Demographics	17

### EXISTING TRANSPORTATION SYSTEM

Streets and Highways	19
Federal Functional Classification System	19 - 20
Functional Classification Map	23
Bicycle and Pedestrian System	24
Public Transportation	29
Aviation Mode	32
International Crossings	34
Freight	35
HSBMPO Railroad facilities	38
Safety and Security	40
Hurricane Evacuation Routes	41 - 42
Maritime	43

### GOALS & OBJECTIVES

Vision Statement	44
Goals	45 - 48

## **TRANSPORTATION SYSTEM IMPROVEMENTS**

Federal Guidance	49
Travel Demand Model	49
Congestion Management Process	50
Level of Service Map	54
Congestion Management Process Map	55
Roadways of Concern Map	56
Transportation Infrastructure	57
2015-2040 MTP Project Selection Criteria	58 -59
2015-2040 MTP Recommended Listing of Projects	61
2015-240 Metropolitan Tranprotaion Plan Map	62

## **FINANCIAL PLAN**

Introduction	63
Background and Methodology: Highway	63
Background and Methodology: Transit	64

## **ENVIRONMENTAL REVIEW**

NEPA	67
Environmental & Community Impacts	68
Natural Environment	69
Air Quality Status	71

<b>2015-2040 MTP PUBLIC COMMENT</b>	<b>72</b>
-------------------------------------	-----------

<b>CONCLUSION</b>	<b>75</b>
-------------------	-----------

<b>GLOSSARY &amp; ACRONYM LIST</b>	<b>76 - 87</b>
------------------------------------	----------------



**The preparation of this report has been financed in part through grant [s] from the Federal Highway Administration, Federal Transit Administration, and U.S. Department of Transportation. The contents of this report do not necessarily reflect the official views or policy of the U.S. Department of Transportation.**